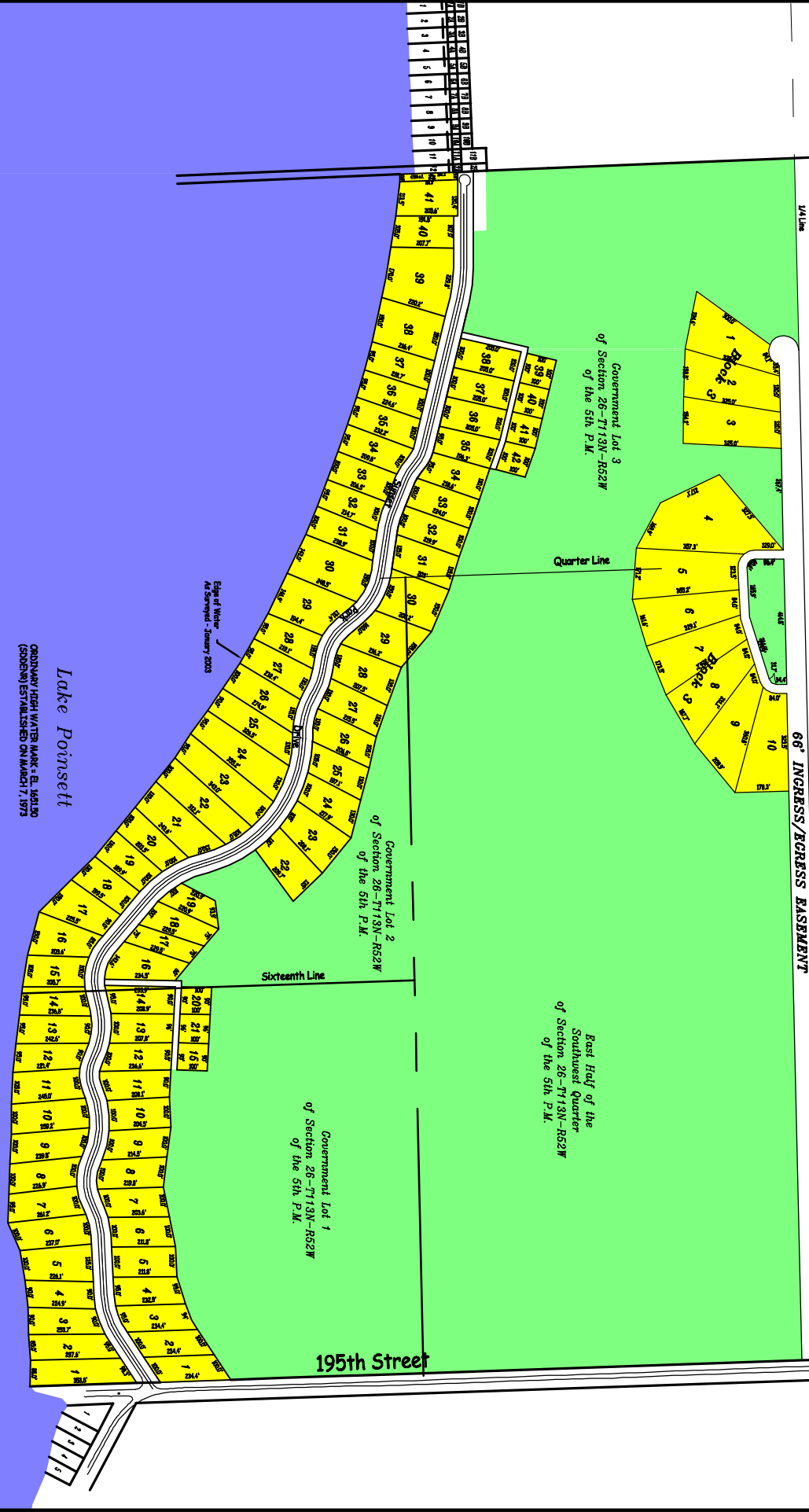


*Legal Description*  
 IN GOVERNMENT LOTS 1, 2 AND 3 AND THE EAST  
 HALF OF THE SOUTHWEST QUARTER (S1/2, SW1/4)  
 OF SECTION 26-T113N-R52W OF THE 5TH P.M.  
 HAMLIN COUNTY, SOUTH DAKOTA  
**SUNSET PARK ESTATES - LAKE POINSETT, SD**  
 Dakota Realty and Auction, LLC

66' INGRESS/EGRESS EASEMENT



**BANNER ASSOCIATES, INC.**  
 409 22ND AVE. S., P.O. BOX 298 BROOKINGS, S.D. 57006  
 (605) 692-4342 · FAX = (605) 692-5714  
 ENGINEERS · ARCHITECTS · SURVEYORS